

# Enhancements

## TidyLine

### A variety of opening configurations for different types of waste

Irrespective of the type of waste - glass, paper, domestic waste or textiles, the containers can be configured with the appropriate throw-in chute.

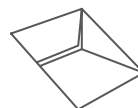
Also in our product range: Barrel and push-flap openings for textiles or other recyclable or waste materials.



Throw-in chute for glass with diff. color options  
Plastic ring with rubber rim  
Ø 180 mm (or on request)



Custom design suitable for the disabled with additional throw-in opening at height 1200 mm



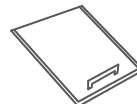
Opening for paper  
Flap with rubber lip  
Opening 435 x 130 mm



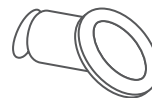
Opening for cans  
Plastic ring  
Ø max. 200 mm



Barrel opening for household waste / textiles



Push-flap for household waste, plastic or textiles  
Opening 400 x 400 mm



Throw-in chute with interior flap protection against insects / noise

### All specifications of crane hook-in device



2-hook system  
Classic lifting system with metal rings



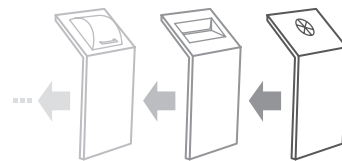
Mushroom system for Kinshofer® gripper KM 920-12 and 921



3-hook system  
Quick emptying of dual-chamber containers with no manual re-hooking



3-hook system for Suden-Traverse lifting system with metal rings for multi-chamber containers



TidyLine design module  
Interchangeability of opening components

Kinshofer® is a proprietary-brand name of the company Kinshofer Greiftechnik GmbH

Subject to technical modifications!

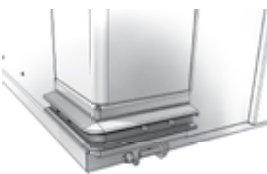
# Enhancements

## TidyLine



### Further accessories

- Triple-layer composite sheet for additional noise reduction  
LWA= 85.0 dB(A)
- Rubber edge guards
- Rubber feet provide cushioning for set-down
- Interior bottom tray prevents infiltration of moisture and shards
- Mounting aids and safety handle for easy access to the hooks



### Electric equipment

**Integrated electronic module for the monitoring of individual containers and for the optimization of emptying cycles and route planning.**

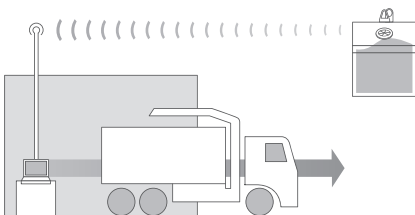
- GPS-receiver for determination of position
- Sensors for fill level control
- GSM for internet access for the transmission of data to the server
- Anti-theft protection via GPS-positioning
- Microphone for the logging of throw-in times

### Powder and protective coatings

- Quality powder-coating in all RAL-colors
- Robust PU or PVDF coating for maximum durability
- Graffiti-resistant coating for easy cleaning of the surface

### Individual design

- Interchangeable design modules
- Quick and easy replacement of opening components
- The slim design is aesthetically pleasing and offers an unmistakable colour-coding system



#### Schletter GmbH

Alustrasse 1

83527 Kirchdorf/Haag i. OB, GERMANY

Tel.: +49 8072 9191 -277

Fax: +49 8072 9191 -9277

gerhard.grosse-schmitz@schletter.de

[www.schletter.eu](http://www.schletter.eu)

**SCHLETTER**