

## AluGrid holding device for surface protection mats

- Safe and simple assembly
- Prevents the surface protection mat from sliding
- For surface protection mats with a thickness of 6 mm or more
- Can also be used with older types of continuous beams



Holding device for AluGrid to safeguard position permanence of the surface protection mat strips under the continuous beams.

Material: Aluminium AlMg3

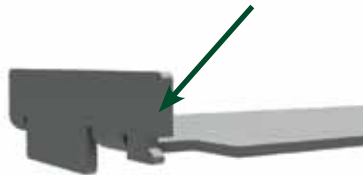
Item number: **169013-002**

### Assembly steps:

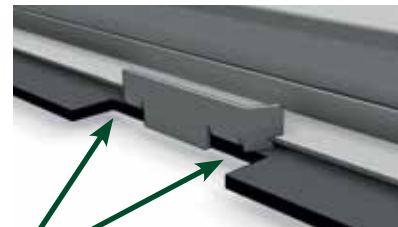
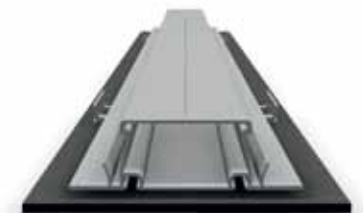
- 1 Lift the continuous beam. Shift the holding device in between the surface protection mat and the load bearing beam to the desired position. Underlay the holding devices at distances of about 500 mm.



- 2 Bend up the two little lugs of the holding device as far as they will go using a pair of combination pliers in order to fasten the holding device to the continuous beam.



- 3 If required, cut the surface protection mat to a width of about 110 mm in the area of the holding device. Put the continuous beam back on the ground. Please make sure that the surface protection mat is enclosed by the lugs on both sides.



Please find further information and our declaration of warranty at: [www.schletter.com.au](http://www.schletter.com.au)